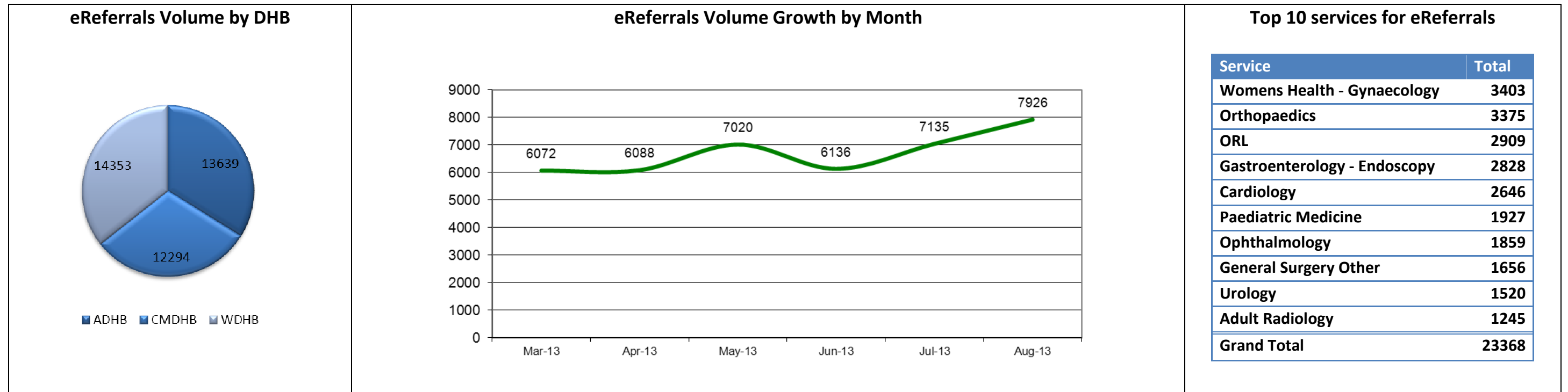


CareConnect eReferrals

Monthly Management and Uptake Report: Data as at 31 August 2013



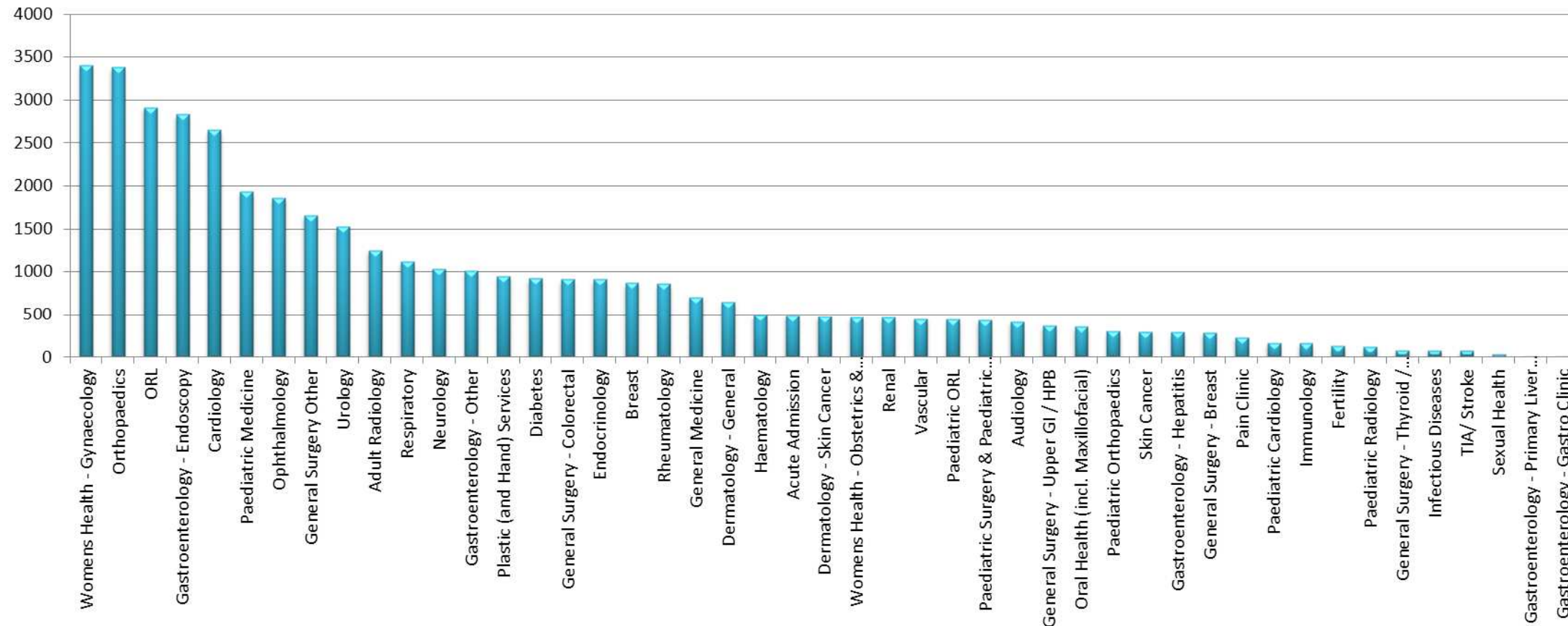
This report shows eReferrals statistics for the period from 31 March 2013 to 31 August 2013.
84,443 referrals have been submitted since go live on 30 September 2011.



CareConnect eReferrals
 Monthly Management and Uptake Report: Data as at 31 August 2013



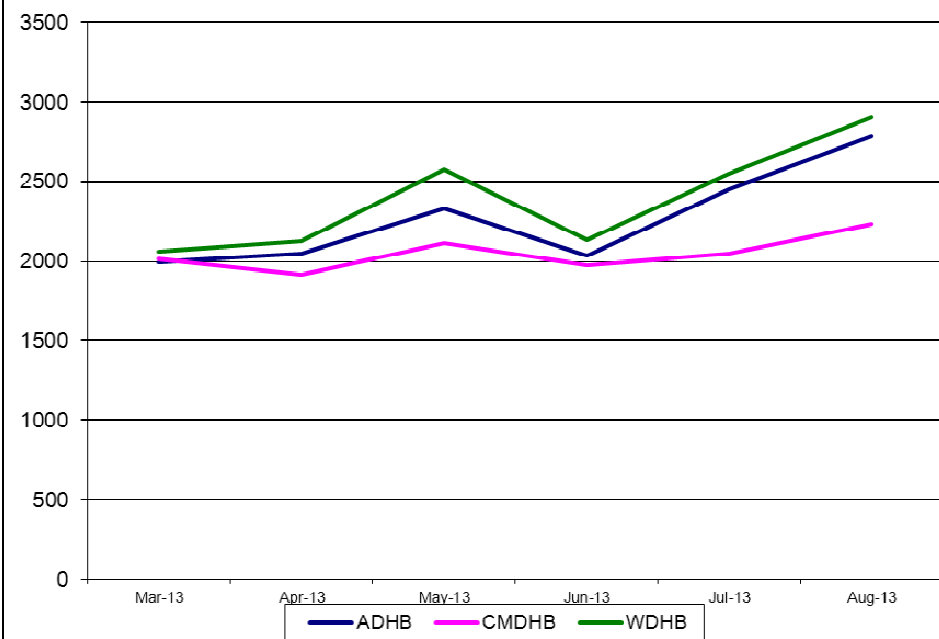
eReferrals Volume by Service



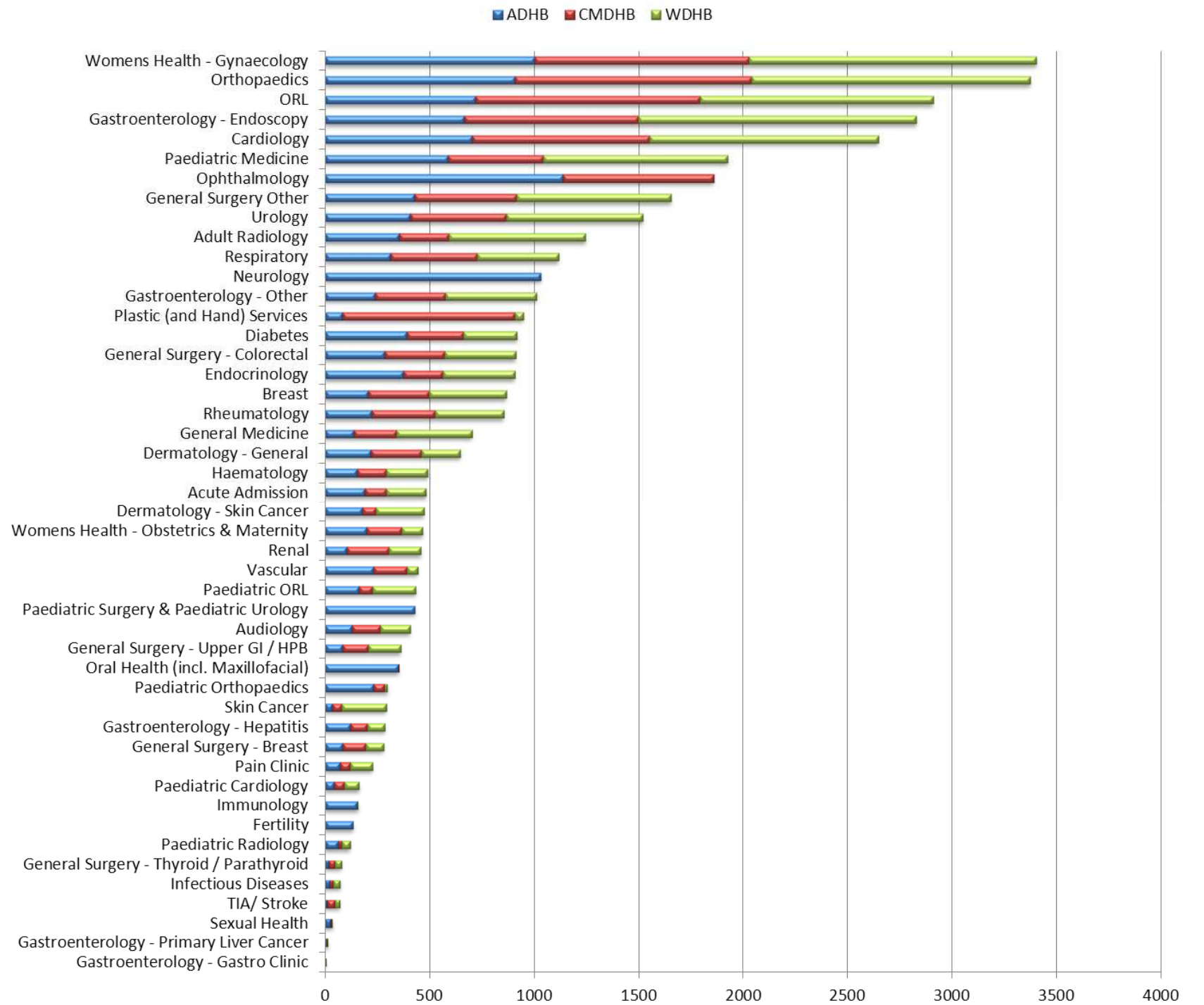
CareConnect eReferrals

Monthly Management and Uptake Report: Data as at 31 August 2013

eReferrals Volume Growth by DHB



eReferrals Volume by DHB by Service



eReferrals Volume by Type

