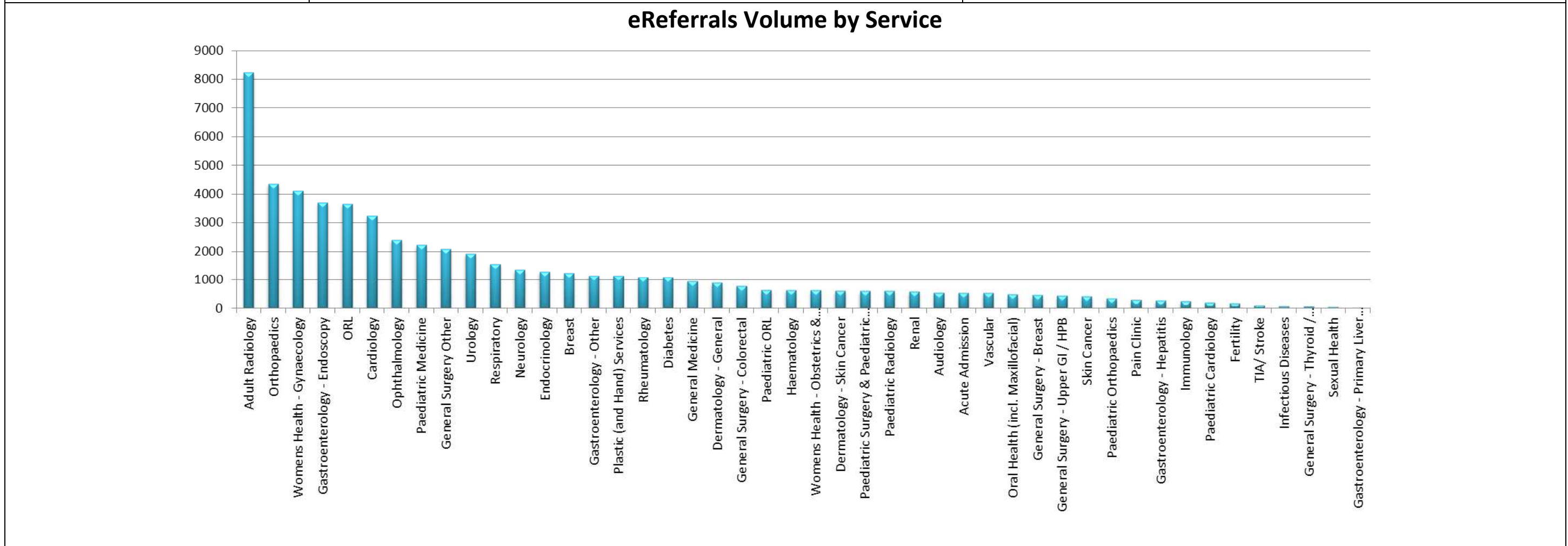
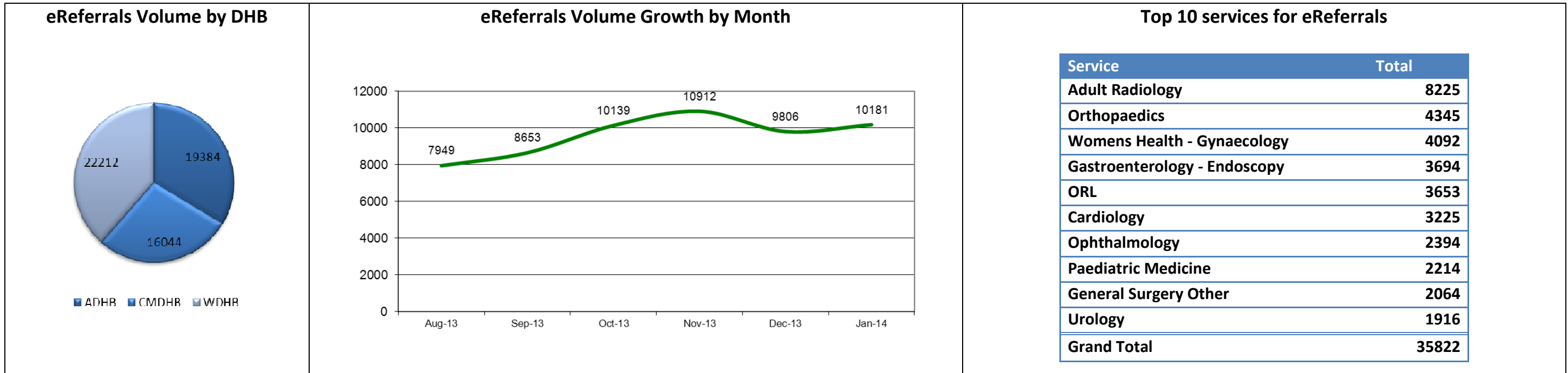


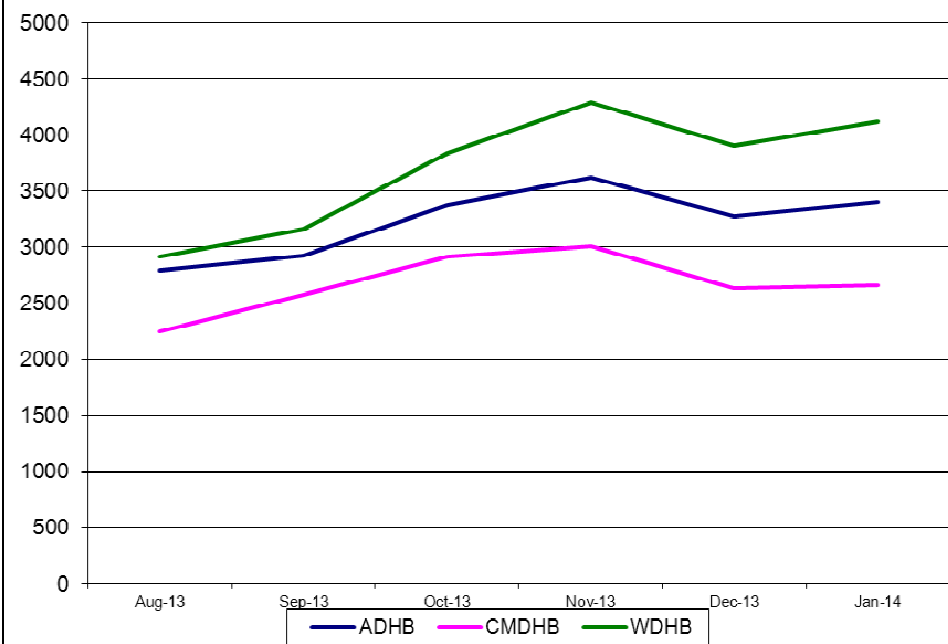
## CareConnect eReferrals Monthly Report: Data as at 31 January 2014

This report shows eReferrals statistics for the period from 01 August 2013 to 31 January 2014.  
**134,769** referrals have been submitted since go live on 30 September 2011.

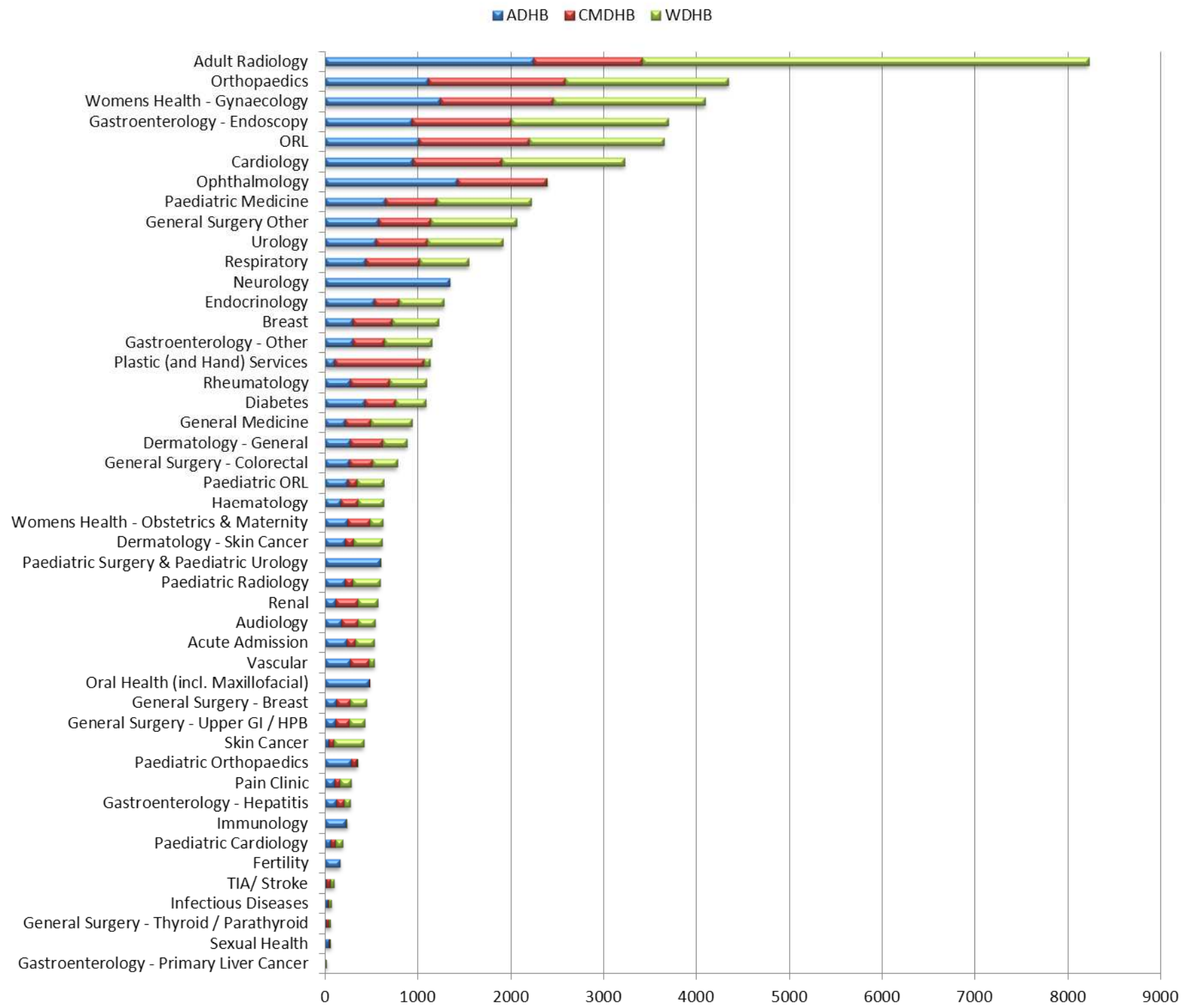


# CareConnect eReferrals Monthly Report: Data as at 31 January 2014

### eReferrals Volume Growth by DHB



### eReferrals Volume by DHB by Service



### eReferrals Volume by Type

